

Wellness Walk (Indoor)



Turn onto Skywalk over 12th Street



Skywalk over 12th Street



Turn North into "A" Bldg



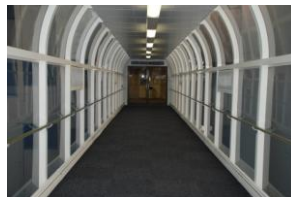
Turn East at Nutrition and Diabetes Clinic



Enter Milwaukee Heart Institute, going North



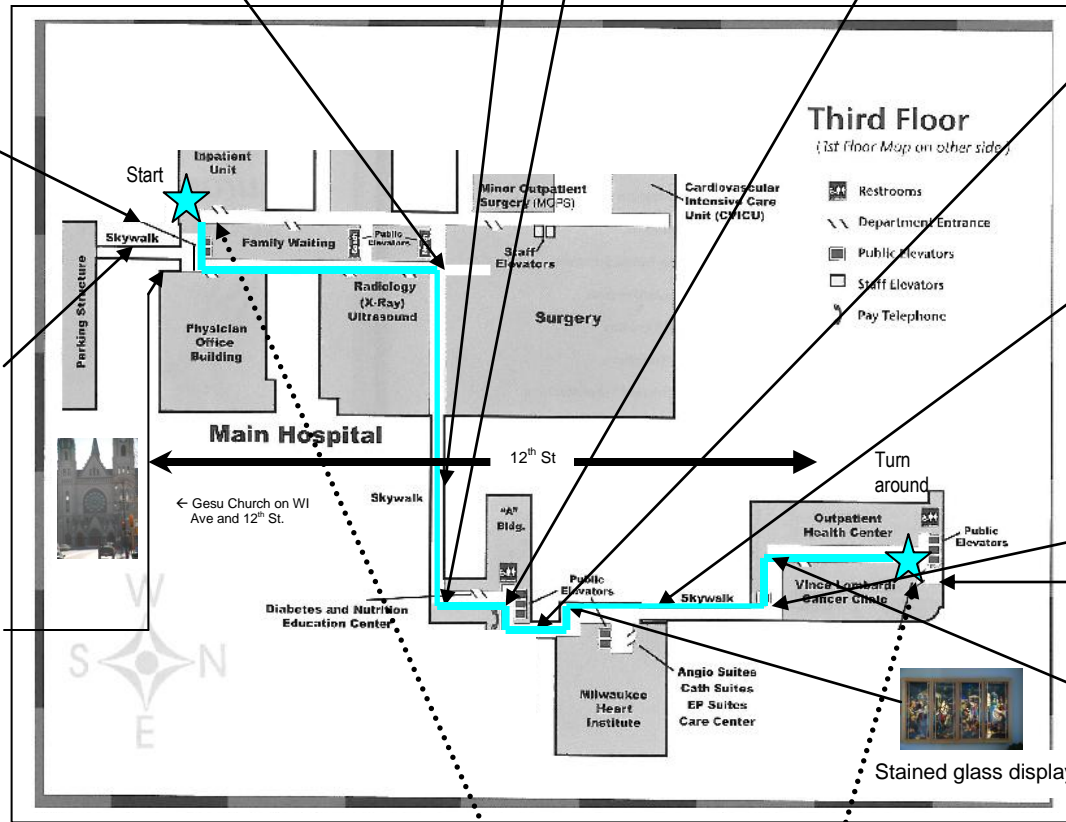
Coming into hospital (3rd floor, South)



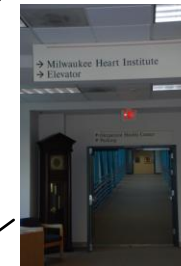
From Parking Structure via Skywalk over Kilbourn (3rd floor, South)



From Kilbourn Ave (1st floor, South)



Approximate 1/3 mile loop



Walk towards Outpatient Health Center, through Skywalk over State Street



Enter Outpatient Health Center (OHC)



Turn North down last hallway (in OHC)



Turn around at artwork!